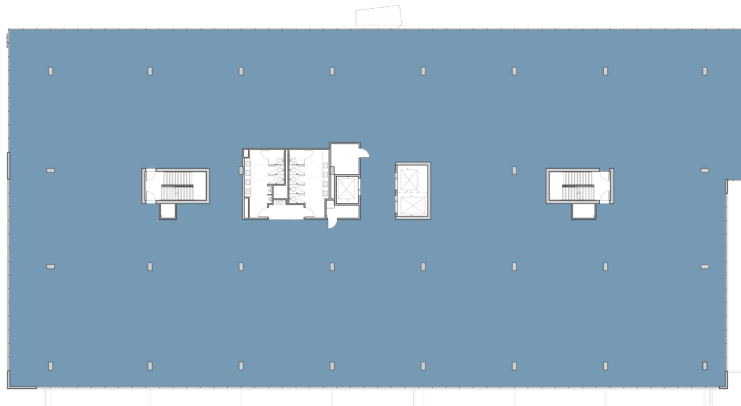




# 999 PLAYA DEL NORTE

ADDRESS	999 Playa del Norte   Tempe, Arizona 85281 Immediately south of the Loop 202 Freeway at Scottsdale Road
TOTAL BUILDING SIZE	94,311 RSF available for build-to-suit
PARKING	4.0/1,000 SF total parking 2.0/1,000 SF unreserved structured parking with elevator access to suite 13 reserved garage executive parking
OPERATING EXPENSE STOP	Base Year
TENANT IMPROVEMENTS	\$50.00/RSF
SIGNAGE	Prominent building signage along 202 Monument sign at site entrance
FINISHED CEILING HEIGHTS	<i>First Floor</i> 12 ft open to structure 10 ft with drop ceiling and window pockets <i>Fourth/Sixth Floor</i> 12 ft open to structure 10 ft with drop ceiling and window pockets
TYPICAL FLOOR PLAN	Fourth-Sixth Floor



**PLAYA DEL NORTE**

TEMPE

999playadelnorte.com



**Jerry Roberts**  
Executive Managing Director  
Cushman & Wakefield  
602.229.5829  
jerry.roberts@cushwake.com

**Pat Boyle**  
Managing Director  
Cushman & Wakefield  
602.229.5828  
pat.boyle@cushwake.com

**Cushman & Wakefield**  
2555 East Camelback Road  
Suite 400  
Phoenix, AZ 85016  
602.253.7900



**Nick Woodruff**  
Development Director  
602.682.0193  
nwoodruff@irgens.com

**Irgens**  
501 N. 44th Street | Suite 100  
Phoenix, Arizona 85008  
602.682.0200 | irgens.com

Information contained herein was furnished by sources deemed reliable and is believed to be accurate; however, no warranty or representation is made as to the accuracy thereof and is subject to correction. Terms subject to change without notice.